

**WHIRLER CENTRIFUGALS PVT LTD**

OFFICE : L605, GIDC, ODHAV, AHMEDABAD 382415, GUJARAT, INDIA  
 WORKS : 13,14,18,19 INDUSTRIAL ESTATE, VARSOLA, MAHEMDABAD, KHEDA 387130, INDIA.  
 info@whirlcentrifugals.com <https://www.whirlcentrifugals.com>  
 GST : 24AAACW1729R1ZX CIN : U29199GJ1990PTC014284



# WHIRLER

## “PARAG” MAKE MONOBLOCK TYPE WATER RING VACUUM PUMP.

Model	POWER HP	AIR FLOW M3/HR	WATER LPM	PIPE SIZE	Price CI	Price P.S.S.	Price S.S
SV-20	1	20	7	20	16,500/-	19,500/-	25,000/-
SV-30	2	35	9	25	20,500/-	28,000/-	33,000/-
SV-40	3	50	10	32	23,500/-	34,000/-	48,000/-
SV-60	5	80	10	36	30,500/-	48,000/-	70,000/-
SV-80	7.5	160	15	50	40,500/-	65,000/-	1,20,000/-
SV-100	10	220	20	60	50,500/-	74,000/-	1,40,000/-
SV-150	15	330	30	80	70,500/-	91,000/-	1,70,000/-
SV-200	20	440	40	125	80,500/-	99,000/-	1,90,000/-

## “PARAG” MAKE MONOBLOCK TYPE WATER RING VACUUM PUMP.



Parag Make Monoblock Type Water Ring Vacuum Pump Manufactured from SS Impeller, High Quality Mechanical Seal, SS Control Plate and SG 150 Grade Casting Material that not only last long but also give trouble free operating life.

**WHIRLER CENTRIFUGALS PVT LTD**

OFFICE : L605, GIDC, ODHAV, AHMEDABAD 382415, GUJARAT, INDIA

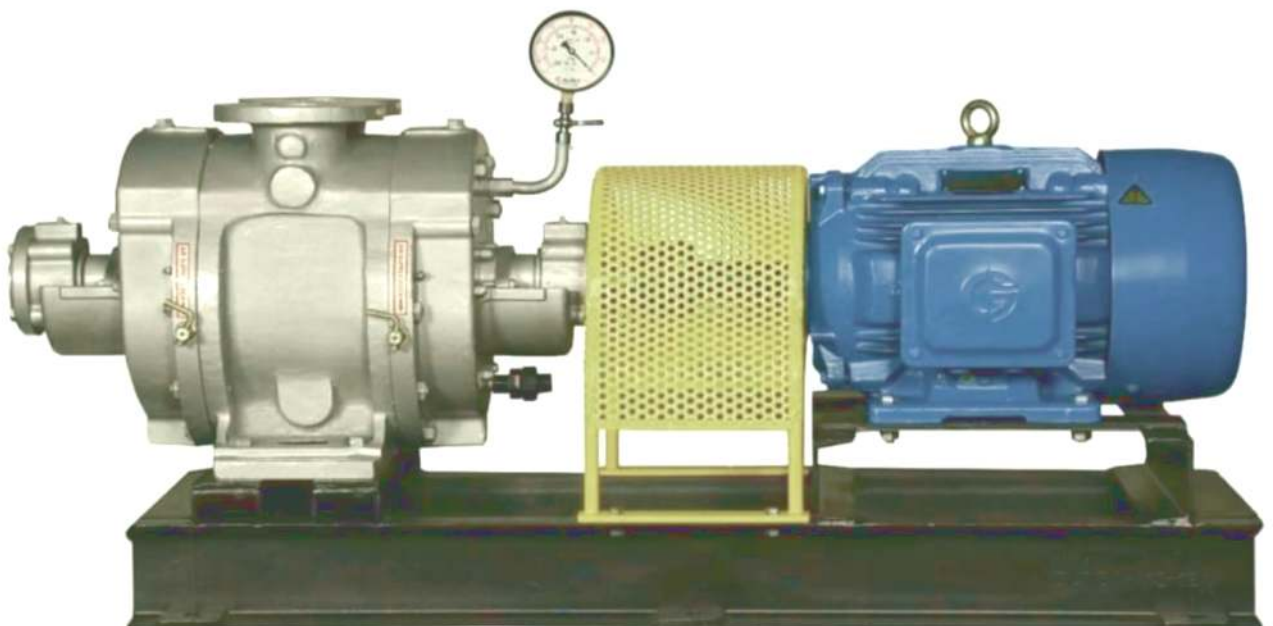
WORKS : 13,14,18,19 INDUSTRIAL ESTATE, VARSOLA, MAHEMDABAD, KHEDA 387130, INDIA.

info@whirlercentrifugals.com <https://www.whirlercentrifugals.com>

GST : 24AAACW1729R1ZX CIN : U29199GJ1990PTC014284

**WHIRLER****"PARAG" MAKE SINGLE STAGE WATER RING VACUUM PUMP.**

Model	RPM	AIR FLOW M3/HR	POWER HP	WATER LPM	PIPE SIZE (mm)	WEIGHT (Kg) Pump only	Price ( in Thousands, INR )		
							CI	P.S.S.	S.S
PW2	2880	50	3	7	25	34	16	21	25
PW3	2880	80	5	10	32	42	21	29	35
PW4	2880	120	7.5	10	40	50	24	35	50
PW5	1440	160	7.5	20	60	170	31	49	70
PW6	1440	220	10	20	60	185	41	66	125
PW7	1440	330	15	30	80	220	51	75	150
PW8	1440	440	20	40	80	245	71	92	180
PW9	980	720	30	60	125	495	81	100	200
PW10	980	845	35	80	125	515	91	115	230
PW11	980	1080	40	100	125	530	100	140	310
PW12	725	1500	65	150	200	910	140	200	400
PW13	725	2025	90	200	200	1080	180	300	500



**WHIRLER CENTRIFUGALS PVT LTD**

OFFICE : L605, GIDC, ODHAV, AHMEDABAD 382415, GUJARAT, INDIA

WORKS : 13,14,18,19 INDUSTRIAL ESTATE, VARSOLA, MAHEMDABAD, KHEDA 387130, INDIA.

info@whirlercentrifugals.com <https://www.whirlercentrifugals.com>

GST : 24AAACW1729R1ZX CIN : U29199GJ1990PTC014284

**WHIRLER****"PARAG" MAKE DOUBLE STAGE WATER RING VACUUM PUMP.**

Model	RPM	AIR FLOW M3/HR	POWER HP	WATER LPM	PIPE SIZE (mm)	WEIGHT (Kg) Pump only	Price ( in Thousands, INR )		
							CI	P.S.S.	S.S
PW32	1440	80	5	10	32	42	25	37	75
PW42	1440	120	7.5	10	40	50	30	42	60
PW52	1440	160	7.5	20	60	170	35	55	85
PW62	1440	220	10	20	60	185	45	75	105
PW72	1440	330	15	30	80	220	55	85	135
PW82	1440	440	20	40	80	245	75	100	225
PW92	1440	720	30	60	125	495	90	115	300



**WHIRLER CENTRIFUGALS PVT LTD**

OFFICE : L605, GIDC, ODHAV, AHMEDABAD 382415, GUJARAT, INDIA  
WORKS : 13,14,18,19 INDUSTRIAL ESTATE, VARSOLA, MAHEMDABAD, KHEDA 387130, INDIA.  
info@whirlcentrifugals.com https://www.whirlcentrifugals.com  
GST : 24AAACW1729R1ZX CIN : U29199GJ1990PTC014284

**WHIRLER**

- The Pump price is WITHOUT Electric Motor.
- C.I. : CASTING : IMPELLER SS304, BODY SG IRON
- P.S.S. : PARTLY STAINLESS STEEL, INNER PART SS 316, BODY SG IRON
- S.S. : FULLY S.S. INNER CONTACT PART SS 316, BODY SS 304
- Please confirm the suitability of the Water Ring Vacuum Pump to your application with us before final order.
- We are not responsible for any damage or leakage during transportation.
- We test each pump for the ultimate vacuum achieved at the suction of the Pump. We do not test each pump for displacement.

Our warranty is for 12 months from the date of dispatch. Warranty includes parts that may need to be replaced because of manufacturing defects. Warranty does not include cost of transportation, lodging or boarding for person or pump. Warranty is not offered in case of third party damage due to mishandling.

**Terms & Conditions :**

1	Prices	Ex-works at Odhav, Ahmedabad basis in unpacked condition.
2	Tax	GST @ 18% EXTRA.
3	Packing & Forwarding	2% Extra
4	Transportation	Extra At Actual on To Pay Basis.
5	Payment	100 % of the order value as advance along with confirmed order.
6	Delivery	2 to 3 weeks from the date of receipt of your P.O. with advance.
7	Validity	Up to 15 days Only.

Awaiting for your favorable reply. For further technical or commercial queries please write to us.

Thanks & Regards,

**GOPAL PATEL, DIRECTOR @ WHIRLER CENTRIFUGALS PVT LTD**

Email your inquiries at E-mail: [info@whirlcentrifugals.com](mailto:info@whirlcentrifugals.com)

Sales & Marketing: Mobile: 09426419038, 08264365693

**Our Ordering Details are as follows.**

WHIRLER CENTRIFUGALS PVT LTD

Office : L605, GIDC, Odhav, Ahmedabad 382415, Gujarat, India

Works : 13,14 Industrial Estate, Varsola, Mahemdabad, Kheda 387130, Gujarat, India.

GST : 24AAACW1729R1ZX CIN : U29199GJ1990PTC014284

BANK : IDBI Bank Limited. Maninagar Branch.

BANK : IFSC : IBKL0000286 A/C. No. 0286658400000198