

DEWATERING DECANTER CENTRIFUGE

ISSUE: 13 AUGUST 2008 REV. 3 JAN 2019

SUBJECT TO TECHNICAL CHANGES OR ERROR.

DOCUMENT NO: MC-DDC-GC-19 CIN: U29199GJ1990PTC014284

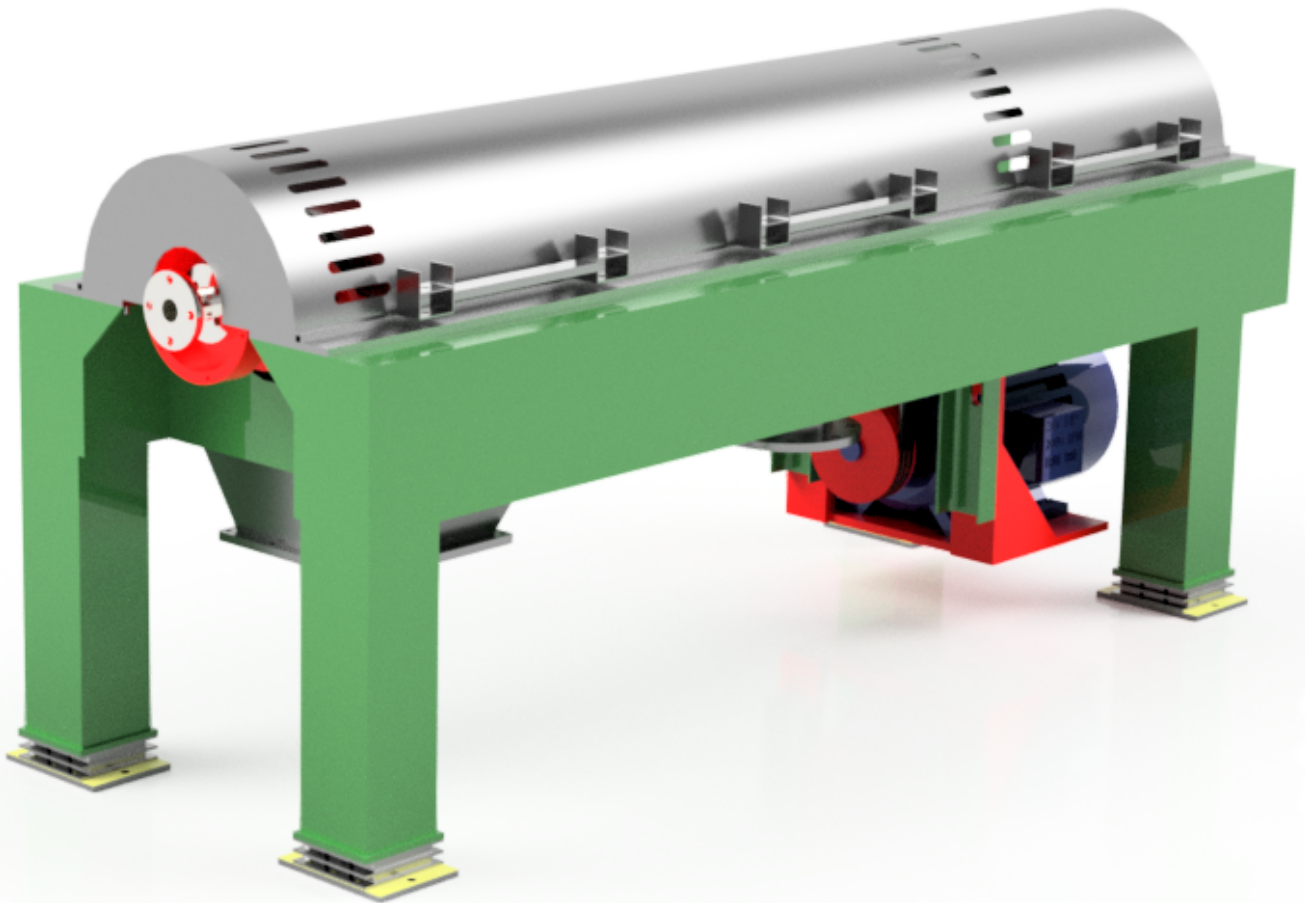


WHIRLER



TWO PHASE DECANTERS FOR SLUDGE / MANURE / ORGANIC WASTE DEWATERING **HORIZONTAL DECANTER CENTRIFUGE**

0.1 M³/HR TO 100 M³/HR



WHIRLER CENTRIFUGALS PVT LTD

Office : L605, GIDC, Odhav, Ahmedabad 382415, Gujarat, India

Works : 13,14 Industrial Estate, Varsola, Mahemdabad, Kheda 387130, Gujarat, India.

Website : <https://www.whirlercentrifugals.com>

Email : info@whirlercentrifugals.com



Your Advantages

- a. High Reliability
 - i. Robust Construction
 - ii. Simple Working Principle
 - iii. High Quality Material
 - iv. Standard Motor
- b. Ease of Maintenance
 - i. Fewer Component
 - ii. Simple Assembly
 - iii. Standard Sizes
- c. Cost Effective
 - i. Longer Operating Life
 - ii. Energy Efficient
 - iii. Standard Spares

Whirler Advantage

1. Cost Effective Reliable Solution.
2. All Standardized Parts and Components.
3. Exact Outputs.
4. Energy Efficient.
5. Low Noise, Low Odor & Low Wash Water Consumption.
6. Rapid Installation.
7. VFD Control as Standard.
8. Modular Wear Parts.
9. Noise Reducing Solid & Liquid Outlet Cover.

Table : Material of Construction

Item	Screw	Solid Bowl	Base Frame	Connection	Bearing Housing		
Decanter Centrifuge	Stainless Steel with Hardened flight	Stainless Steel	M.S. Box Structure	ISO Flanges	S.G.Iron		
	Gearbox	Electric Panel Panel	Drive	Wear Protection	Color	Feed Pipe	
	Cycloid High Torque	M.S. Fabricated & Powder Coated	V-Belt	Stellite / Hastelloy	Epoxy Coated	Stainless Steel	
	Sealing	Differential Speed Control		Switch Gears & Electric Motor			
	Silicone Seals	Variable Frequency Drive		Schneider / ABB / Equivalent IE2/IE3 F Class IP54			

Results achieved with "WHIRLER" Dewatering Decanter*

Application type	Input Free Solids (%)	Cake solids (%)	Solid Recovery (%)	Liquid Separation (by volume %)
Biogas Manure	0.2 - 15	17 - 65	80-98	98
STP Sludge	0.1 - 15	17 - 75	99	99
Food Waste	0.5 - 15	17 - 50	75-90	-

* Performance is adjustable by differential RPM up to certain limits via built in VFD.



List : Optional Accessories & System

1. Air-Oil Lubrication Arrangement Instead of Standard Grease Based Lubrication
2. Bearing Temperature Indicators
3. Solid Output Screw Conveyor
4. Machine Mounted Electric Control Panel
5. Nitrogen Purging
6. High Temperature Sealing / Bearing / Drive System
7. Feed Pump
8. Vibration Auto Switch

- Not all accessories are applicable to all models.

Standard Models

Model	Capacity Liters Per Hour (LPH)	Bowl Internal Dia (mm)
20D	500-2000	200
25D	2000-10000	250
35D	3500-20000	350
45D	10000-40000	450
60D	25000-100000	600

Range of Performance

Screw Diameter (mm)	50mm to 600mm
Solid Flow Rate (kg/hr)	50kg/hr to 10000kg/hr
Material of Construction	MS, SS304, SS316, Alloy Steel
Inclination (degree)	-30 Degree to +30 Degree
Motor Power (kw)	0.18kw to 100kw

* Capacity & motor Power is an indicative and approximate measure, and depends on, solid percentage in liquid, oil water ratio, input feed temperature, input feed flow among other parameters.